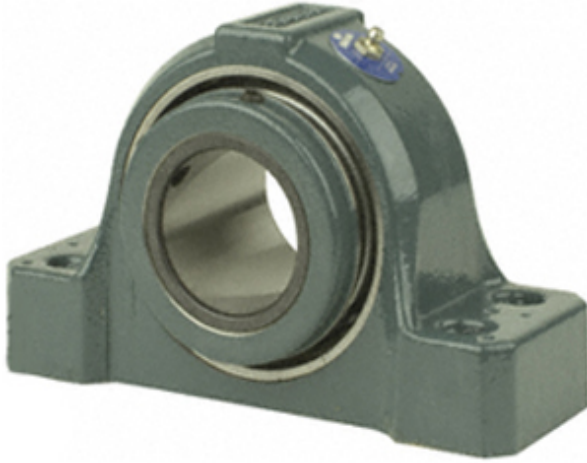




LLC NTN-SNR BEARINGS RUS



3 Inch | 76.2 Millimeter x 3.59 Inch | 91.186 Millimeter x 3.125 Inch | 79.38 Millimeter Dodge SEP4B-S2-300R Pillow Block Roller Bearing Units

Bearing No. SEP4B-S2-300R

SEP4B-S2-300R Bearing 2D drawings and 3D CAD models

Category	Pillow Block Bearings
Inventory	0.0
Manufacturer Name	ABB MOTORS AND MECHANICAL INC
Minimum Buy Quantity	N/A
Weight	13.562
EAN	0782476367480
Product Group	M06288
Number of Mounting Holes	4
Mounting Method	Concentric Collar
Housing Style	4 Bolt Pillow Block
Rolling Element	Spherical Roller Bearing
Housing Material	Cast Steel
Expansion / Non-expansion	Non-expansion
Mounting Bolts	5/8 Inch
Relubricatable	Yes
Insert Part Number	INS-S2-300R
Seals	Triple Lip Contact
Housing Configuration	1 Piece Solid
Inch - Metric	Inch
Other Features	Double Row Has Flinger With Set Screw
Long Description	4 Bolt Pillow Block; 3" Bore; 3-1/8" Base to Center Height; Concentric Collar Mount; Spherical Roller



LLC NTN-SNR BEARINGS RUS

	Bearing; 9.18" Minimum Bolt Spacing; 9.82" Bolt Spacing Maximum; Relubricatabl
Category	Pillow Block
UNSPSC	31171511
Harmonized Tariff Code	8483.20.40.80
Noun	Bearing
Keyword String	Pillow Block
Manufacturer URL	http://www.dodge-pt.com
Manufacturer Item Number	SEP4B-S2-300R
Weight / LBS	27.93
d	3 Inch 76.2 Millimeter
D	3.59 Inch 91.186 Millimeter
Bolt Spacing Minimum	9.18 Inch 233.172Millimeter
Actual Bolt Center to Center	0 Inch 0Millimeter
Bolt Spacing Maximum	9.82 Inch 249.428Millimeter
Nominal Bolt Center to Center	9.5 Inch 241.3 Millimeter
B	3.125 Inch 79.38 Millimeter